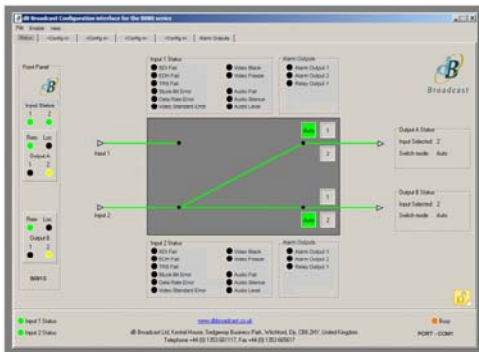




B092S SDI Intelligent Monitor Module, with 2x2 Switch

The B092S from dB Broadcast continuously monitors two SDI video signals and incorporates a 2x2 clean switch. The two inputs are typically main and reserve signals and the module can switch any of the inputs to the two outputs of the switch. There are 2 re-clocked outputs per switched output.

The switching conditions and alarms are user configurable using dB Broadcast's S080 windows configuration software or a command line interface.



S080 Configuration interface for the B092S



- **Integrity checks:**
 - SDI fail
 - EDH errors
 - TRS fail
 - Data rate error and others
- **Signal content:**
 - Video black
 - Video freeze
- **Audio detection and processing of embedded signals:**
 - Audio fail
 - Audio silence
 - Audio level

The internal 2x2 switch enables the module to automatically route the appropriate input stream to output A and B on the basis of the detected results. Automatic operation is configurable by the user but the switch may also be externally controlled via the front panel, external GPI's, or one of the 2 serial ports. An Ethernet option is also available. In all cases, switching can be immediate or seamless with the reference being set using the S080 menus to either input.

The status of the input signals and the switch is indicated on the front panel, the serial ports and the user configurable general-purpose outputs.

The 2x2 switch has various user configurable modes including:
Biased - switches the output away from a failed input and back again when the preferred input comes good again. The output can be biased to input 1 or input 2.
Unbiased - switches the output away from a failed input and the output stays on this new input indefinitely whilst it remains healthy. This mode minimises the number of switches.

The B092S is part of the Hawkeye family and two modules can be housed in a 1RU frame with dual PSUs or fourteen in a 3RU frame including redundant PSU.